




Priced From

\$449,990

3 Elevations Available

 **2 - 3** Bedrooms

 **2** Bathrooms

 **1,409+** Sq. Ft.

 **2** Car Garage

Available to build on COTTAGE HOMESITES

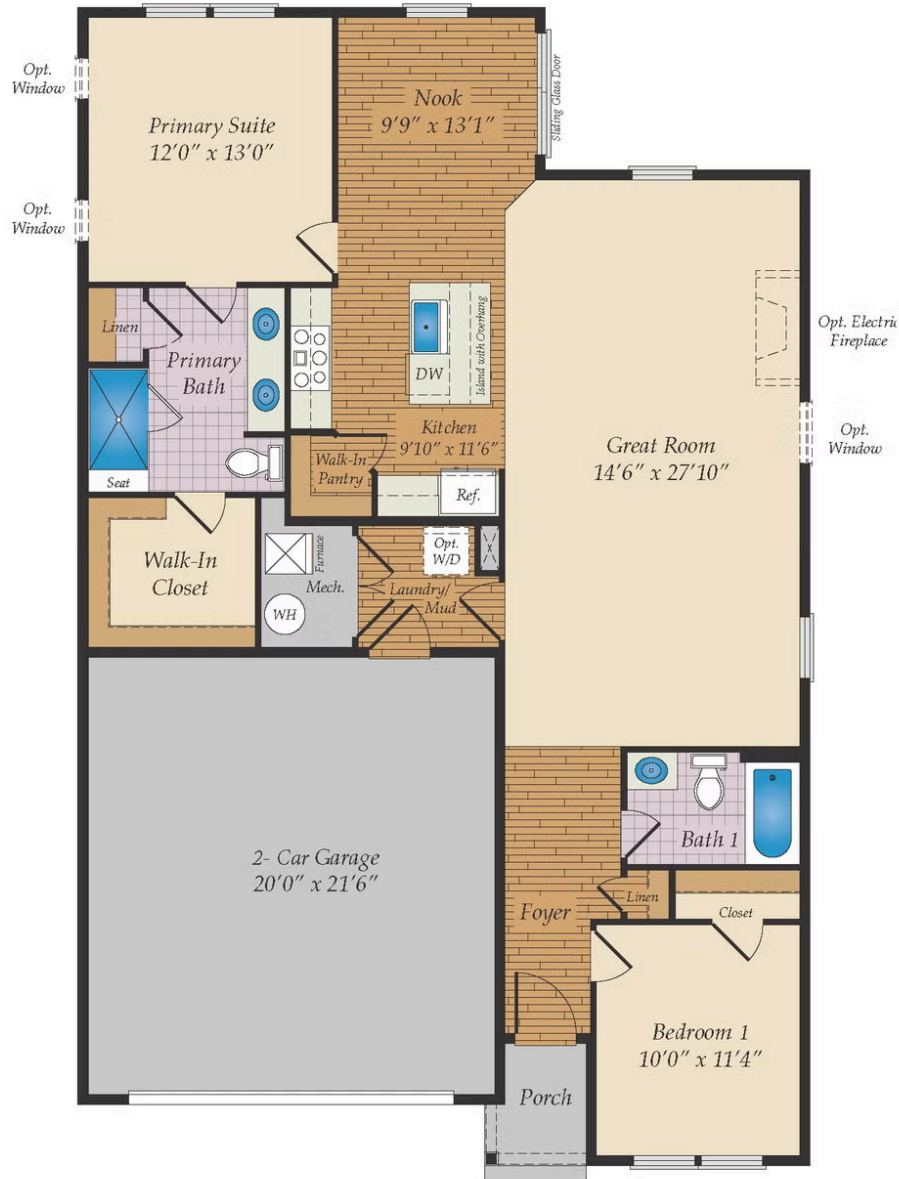
For those who want a smaller home with a big personality, the Osmond makes great use of space within a smaller footprint. The open floor plan includes an oversize great room measuring in at a whopping 14' x 28', which you can keep as open living area or close off a portion to create a 3rd bedroom, a home office or finished storage space. The kitchen features a center island, walk-in pantry and breakfast nook with a slider that opens to an optional patio, screened porch or sunroom. The primary suite includes an ensuite bath with double sinks, walk-in shower and a large walk-in closet. An extra bedroom and full bath for guests and laundry/mud room leading to a 2-car garage complete the home.



All square footage is approximate. Renderings are artist's conceptions and may vary slightly from the actual home. Homes may be built in reverse of plans shown, depending on site conditions. Minor architectural changes may be made occasionally at the option of the builder. Please contact your Sales Consultant for details.

First Floor

FIRST FLOOR



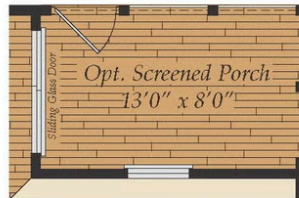
All square footage is approximate. Renderings are artist's conceptions and may vary slightly from the actual home. Homes may be built in reverse of plans shown, depending on site conditions. Minor architectural changes may be made occasionally at the option of the builder. Please contact your Sales Consultant for details.

Additional Options

ADDITIONAL OPTIONS



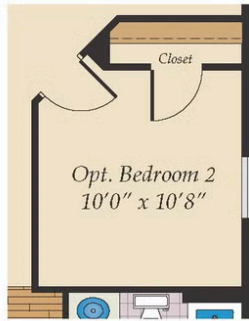
OPT. PORCH



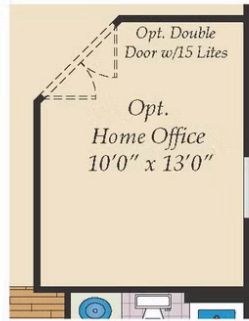
OPT. SCREENED PORCH



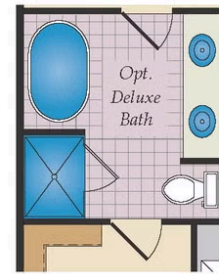
OPT. MORNING ROOM



OPT. BEDROOM 2



OPT. HOME OFFICE



OPT. DELUXE BATH