



**Priced From**  
**\$569,990**

**6 Elevations Available**

-  **3 - 4** Bedrooms
-  **2 - 3** Bathrooms
-  **2,130+** Sq. Ft.
-  **2** Car Garage

The Ashland offers the ease of single-level living with an open, inviting layout that brings the kitchen, dining area, and great room together for effortless gathering. Three bedrooms, including a comfortable primary suite, provide main-level living convenience, with the option to add a second-floor loft or fourth bedroom for even more flexibility. Enhance your living space with personalized selections, such as an optional morning room or screened porch, and take advantage of the optional tandem 3-car garage—perfect for an extra vehicle, a golf cart, or added storage.

**Some photos have been virtually staged to showcase the true potential of rooms and spaces in the home.**



All square footage is approximate. Renderings are artist's conceptions and may vary slightly from the actual home. Homes may be built in reverse of plans shown, depending on site conditions. Minor architectural changes may be made occasionally at the option of the builder. Please contact your Sales Consultant for details.

# Ashland First Floor

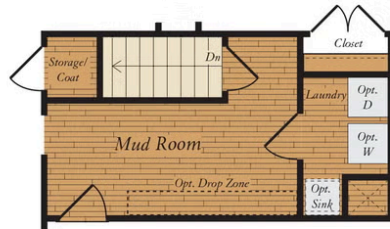
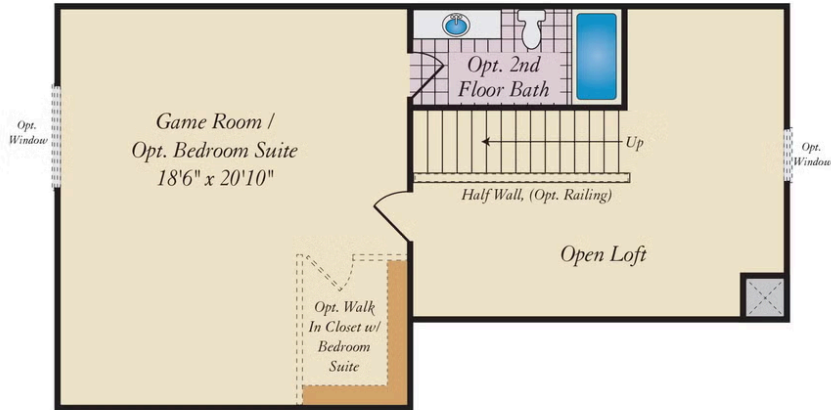
## FIRST FLOOR



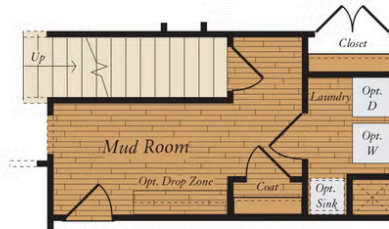
All square footage is approximate. Renderings are artist's conceptions and may vary slightly from the actual home. Homes may be built in reverse of plans shown, depending on site conditions. Minor architectural changes may be made occasionally at the option of the builder. Please contact your Sales Consultant for details.

## Ashland Second Floor

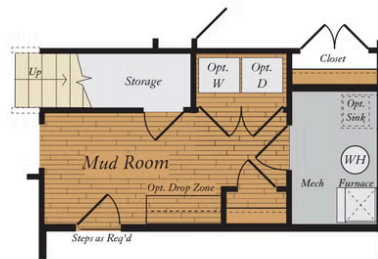
### SECOND FLOOR



1ST FLOOR OPT. BASEMENT



STAIRS TO 2ND FLOOR W/ BASEMENT



STAIRS TO 2ND FLOOR - NO BASEMENT

All square footage is approximate. Renderings are artist's conceptions and may vary slightly from the actual home. Homes may be built in reverse of plans shown, depending on site conditions. Minor architectural changes may be made occasionally at the option of the builder. Please contact your Sales Consultant for details.