



Call for Price

1 Elevation Available

 **3 - 4** Bedrooms

 **3.5** Bathrooms

 **2,430+** Sq. Ft.

 **2** Car Garage

Located along the scenic east side of The Marais at Konterra, the Edge Townes offer a sophisticated blend of architectural charm, modern functionality, and open-air living. Just steps from lush green space and a winding walking trail, these homes offer a peaceful retreat with unmatched connection to the outdoors.

The Edge 2200 is a spacious end unit offering main-level living space with plenty of natural light, a private back yard, and flexible layout options.

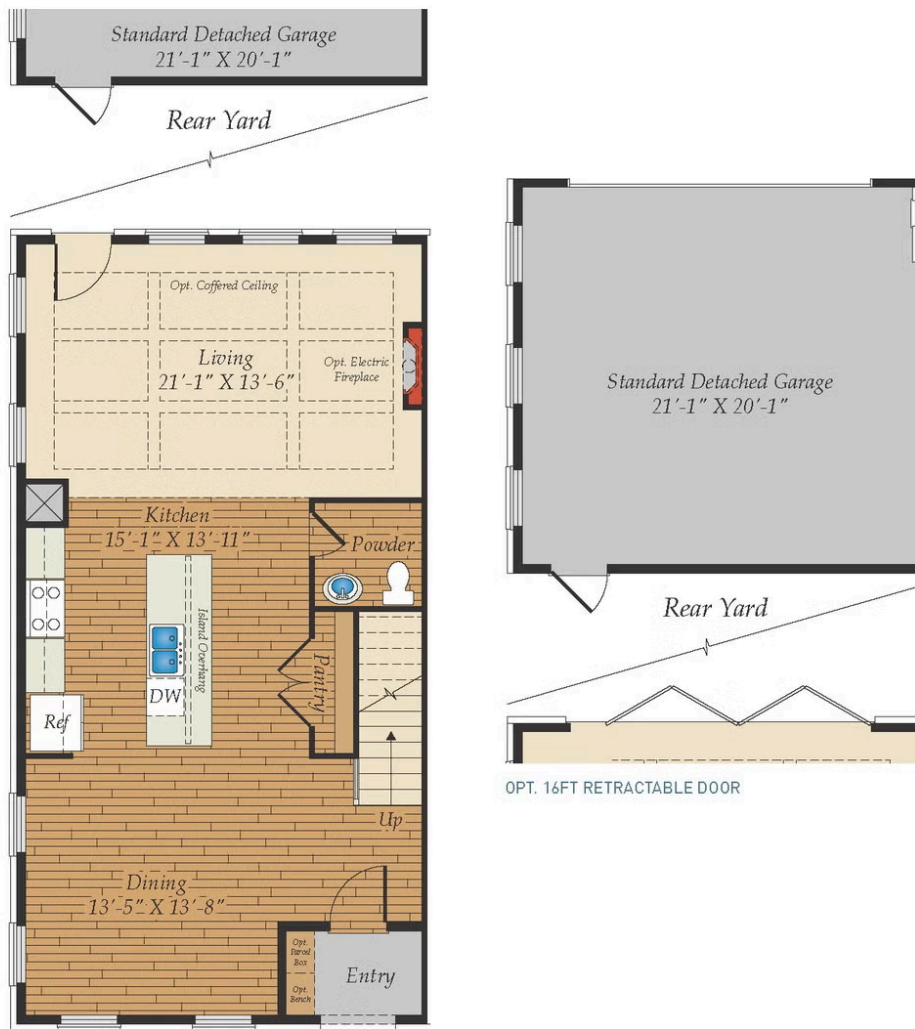
- End Unit
- 2-car Detached Garage
- Back Yard
- Optional Retractable Sliding Door opens Living Space to Back Yard
- Central Kitchen
- Primary Bedroom Suite with Optional Spa Bath
- Bonus Room, 4th Bedroom or Loft
- Optional Covered or Uncovered Rooftop Terrace



All square footage is approximate. Renderings are artist's conceptions and may vary slightly from the actual home. Homes may be built in reverse of plans shown, depending on site conditions. Minor architectural changes may be made occasionally at the option of the builder. Please contact your Sales Consultant for details.

First Floor

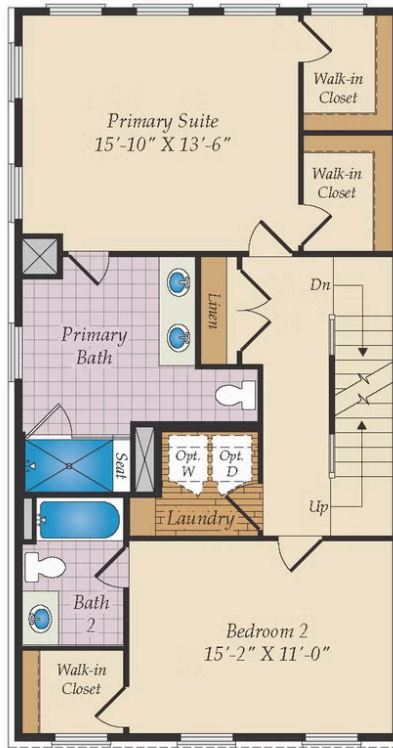
FIRST FLOOR



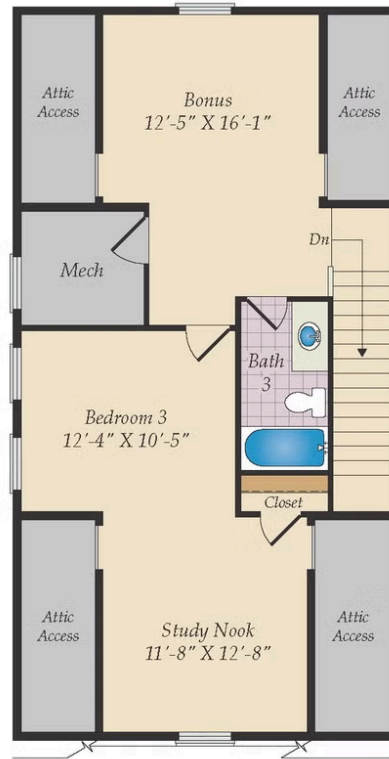
All square footage is approximate. Renderings are artist's conceptions and may vary slightly from the actual home. Homes may be built in reverse of plans shown, depending on site conditions. Minor architectural changes may be made occasionally at the option of the builder. Please contact your Sales Consultant for details.

Second & Third Floor

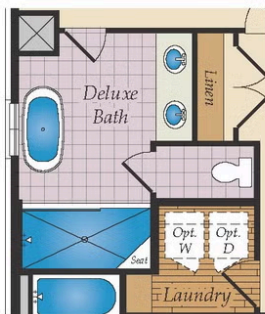
SECOND FLOOR & THIRD FLOOR



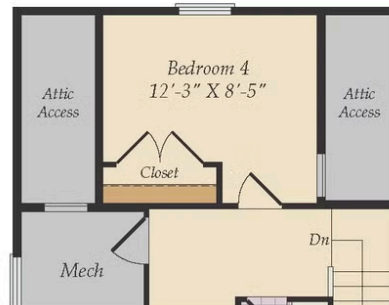
SECOND FLOOR



THIRD FLOOR



OPT. DELUXE BATH - 5 PIECE BATH FOR PRIMARY SUITE



OPT. BEDROOM 4 FOR THE THIRD FLOOR

All square footage is approximate. Renderings are artist's conceptions and may vary slightly from the actual home. Homes may be built in reverse of plans shown, depending on site conditions. Minor architectural changes may be made occasionally at the option of the builder. Please contact your Sales Consultant for details.