



# Call for Price

## 1 Elevation Available

 **3 - 4** Bedrooms

 **3.5** Bathrooms

 **2,184+** Sq. Ft.

 **2** Car Garage

Located along the scenic east side of The Marais at Konterra, the Edge Townes offer a sophisticated blend of architectural charm, modern functionality, and open-air living. Just steps from lush green space and a winding walking trail, these homes offer a peaceful retreat with unmatched connection to the outdoors.

The Edge 2000 is an interior unit offering convenient, ground-level living space, a private outdoor courtyard, and a classic thoughtfully designed floor plan.

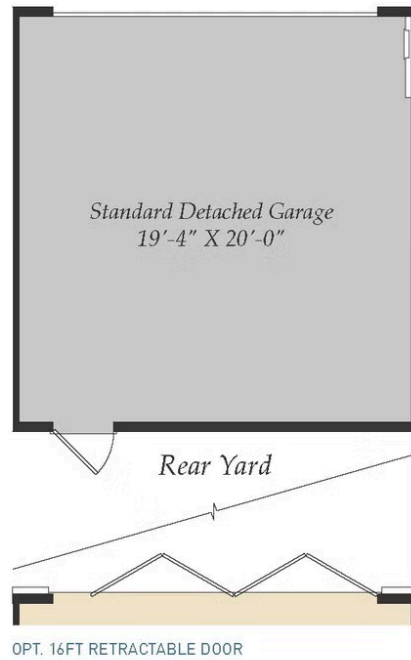
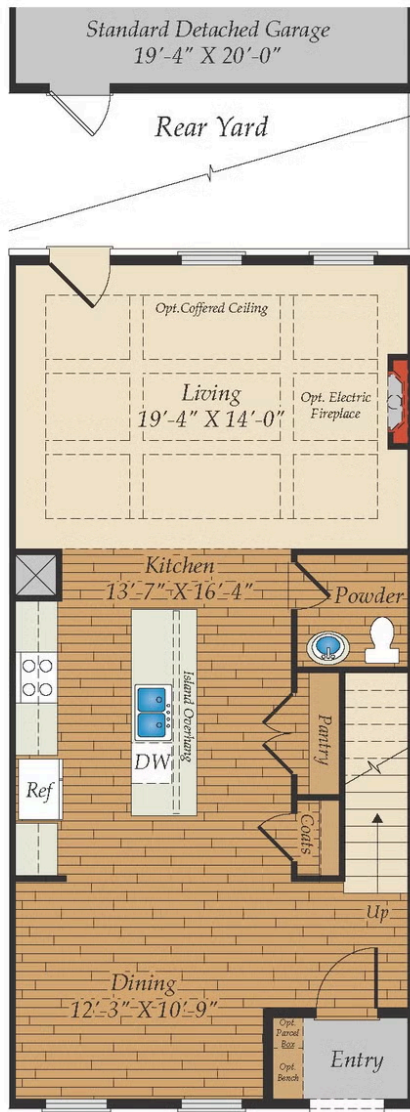
- Interior Unit
- 2-car Detached Garage
- Back Yard
- Optional Retractable Sliding Door opens Living Space to Backyard
- Central Kitchen
- Primary Bedroom Suite with Optional Spa Bath
- Bonus Room or Optional 4th Bedroom



All square footage is approximate. Renderings are artist's conceptions and may vary slightly from the actual home. Homes may be built in reverse of plans shown, depending on site conditions. Minor architectural changes may be made occasionally at the option of the builder. Please contact your Sales Consultant for details.

# First Floor

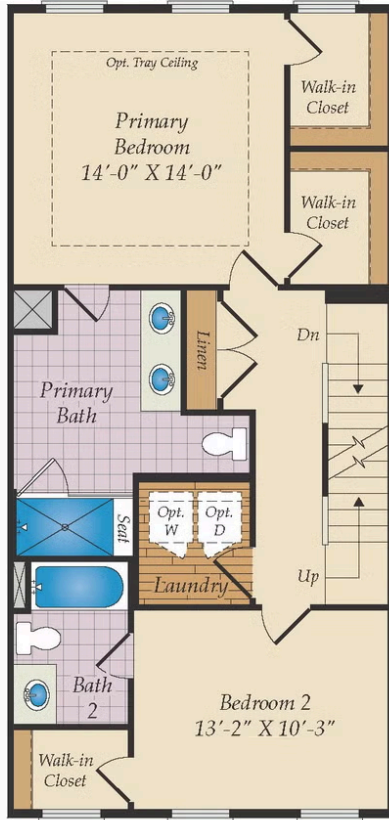
## FIRST FLOOR



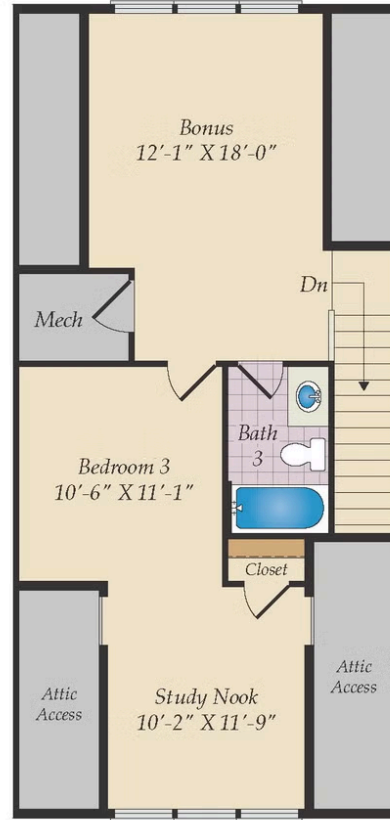
All square footage is approximate. Renderings are artist's conceptions and may vary slightly from the actual home. Homes may be built in reverse of plans shown, depending on site conditions. Minor architectural changes may be made occasionally at the option of the builder. Please contact your Sales Consultant for details.

## Second & Third Floor

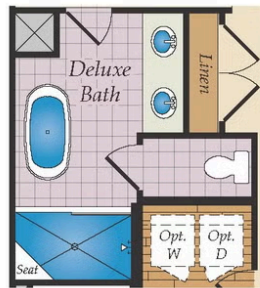
### SECOND FLOOR & THIRD FLOOR



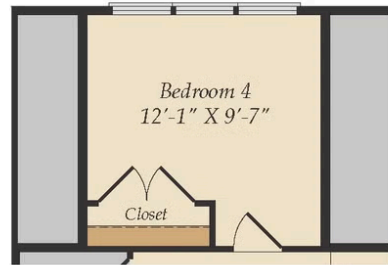
SECOND FLOOR



THIRD FLOOR



OPT. DELUXE BATH - 5 PIECE BATH FOR PRIMARY SUITE



OPT. BEDROOM 4 FOR THE THIRD FLOOR

All square footage is approximate. Renderings are artist's conceptions and may vary slightly from the actual home. Homes may be built in reverse of plans shown, depending on site conditions. Minor architectural changes may be made occasionally at the option of the builder. Please contact your Sales Consultant for details.