

Magothy - Rear Load

Manning Square Towns



Priced From

\$449,990

2 Elevations Available

 **3 - 5** Bedrooms

 **2.5 - 4.5** Bathrooms

 **1,783+** Sq. Ft.

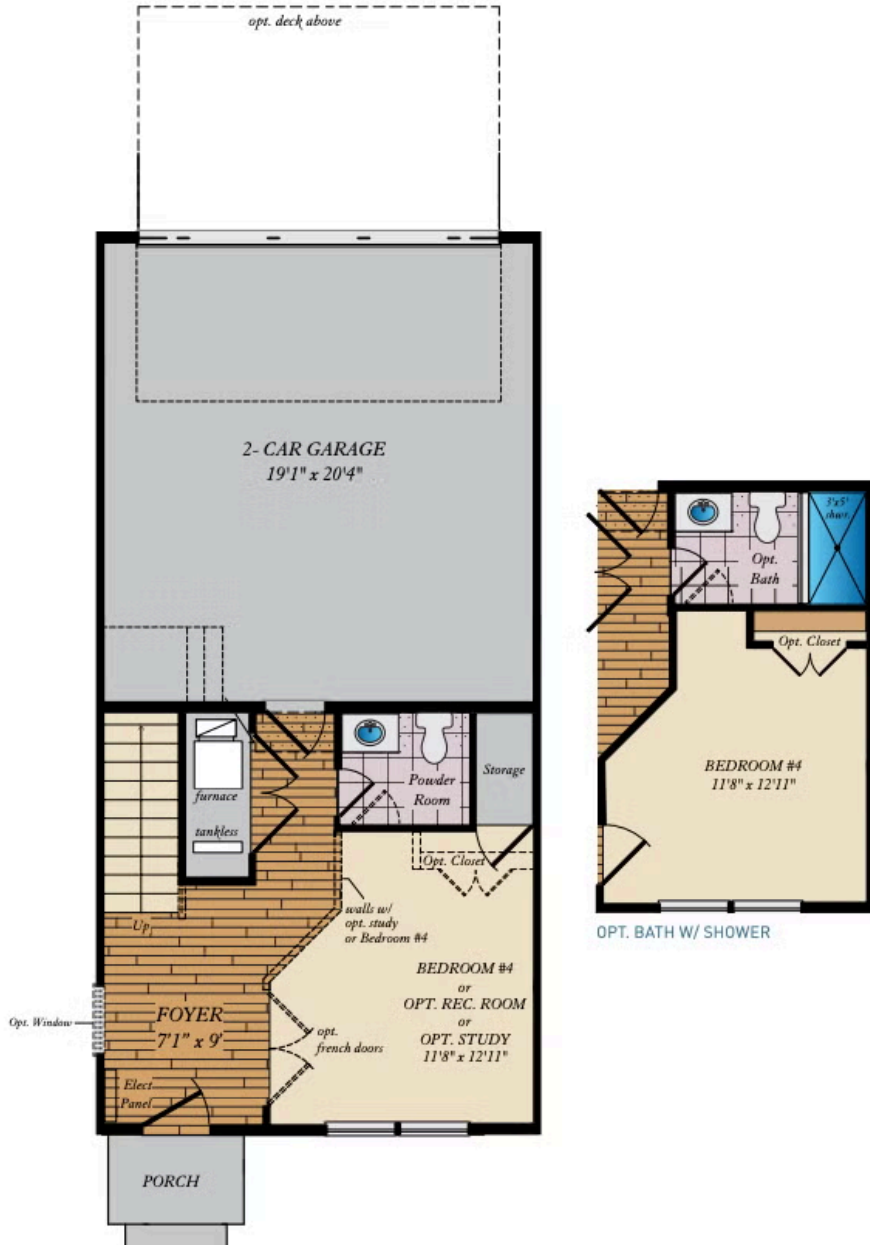
 **2** Car Garage

The Magothy plan is a garage townhome home with up to 2,375 square feet of living space. The rear load plan has a two-car rear load garage and several elevations to choose from. Inside, the home comes standard with 3 bedrooms and 2.5 baths with the option to finish a rec room/study or 4th bedroom and additional bath on the bottom level. Choose from many options and finishes to reflect your personality.



Lower Level

LOWER LEVEL



All square footage is approximate. Renderings are artist's conceptions and may vary slightly from the actual home. Homes may be built in reverse of plans shown, depending on site conditions. Minor architectural changes may be made occasionally at the option of the builder. Please contact your Sales Consultant for details.

First Floor

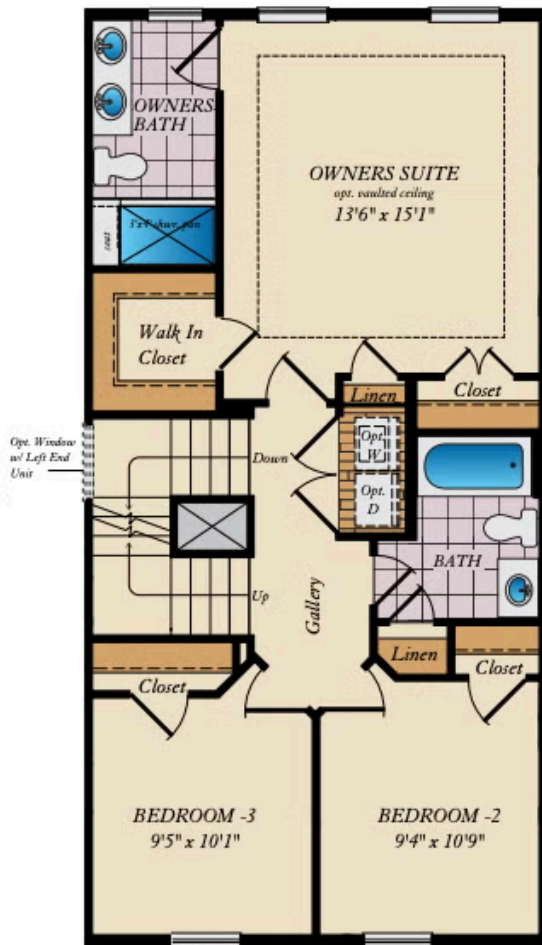
FIRST FLOOR



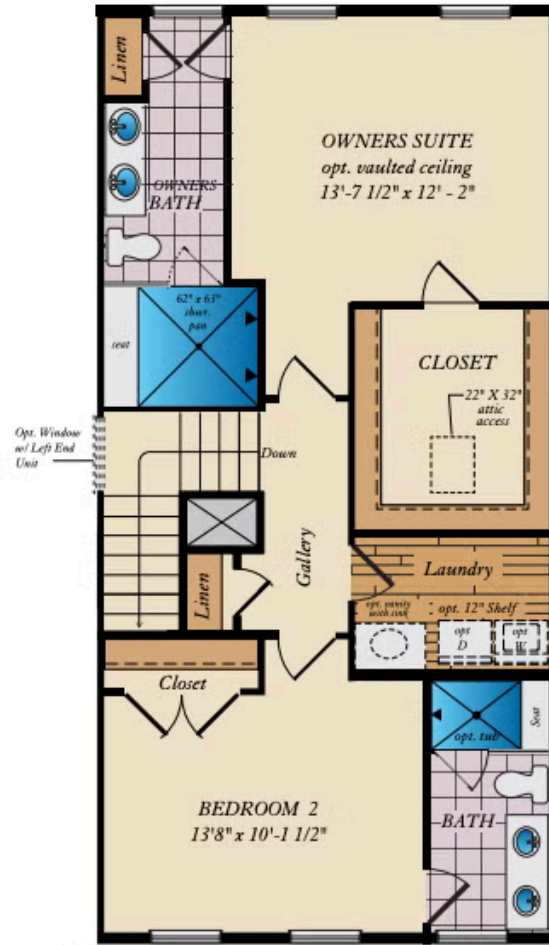
All square footage is approximate. Renderings are artist's conceptions and may vary slightly from the actual home. Homes may be built in reverse of plans shown, depending on site conditions. Minor architectural changes may be made occasionally at the option of the builder. Please contact your Sales Consultant for details.

Second Floor

SECOND FLOOR



STANDARD SECOND PLAN



ALT. SECOND PLAN

All square footage is approximate. Renderings are artist's conceptions and may vary slightly from the actual home. Homes may be built in reverse of plans shown, depending on site conditions. Minor architectural changes may be made occasionally at the option of the builder. Please contact your Sales Consultant for details.